

資料3 クロマトグラムの一例

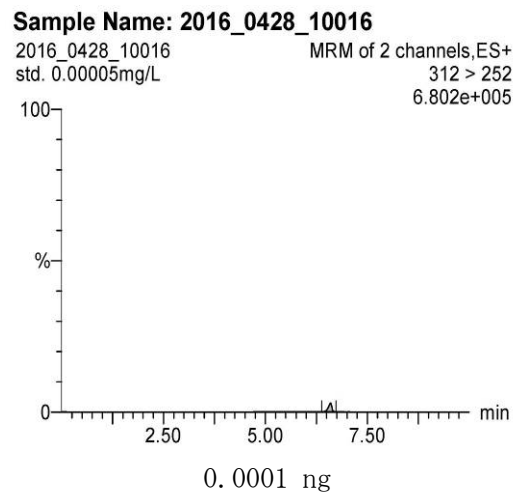
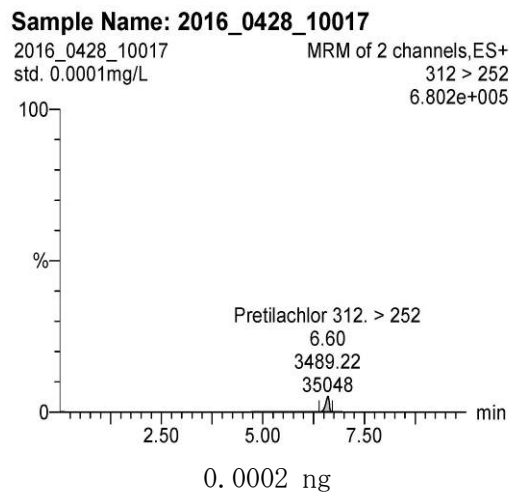
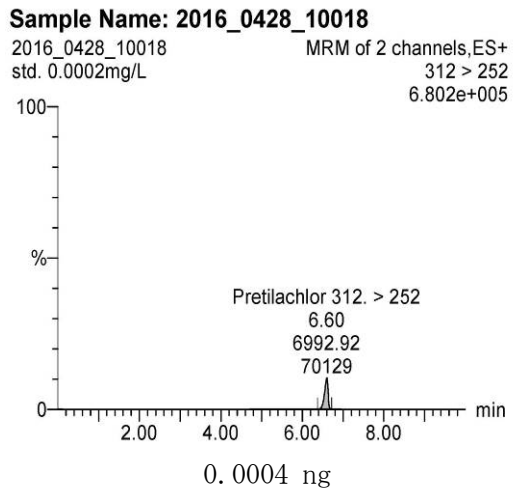
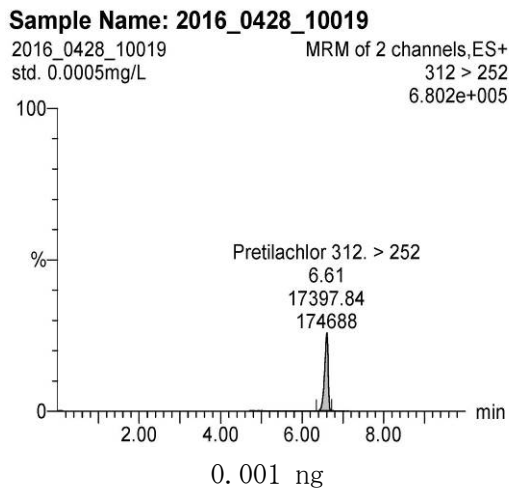
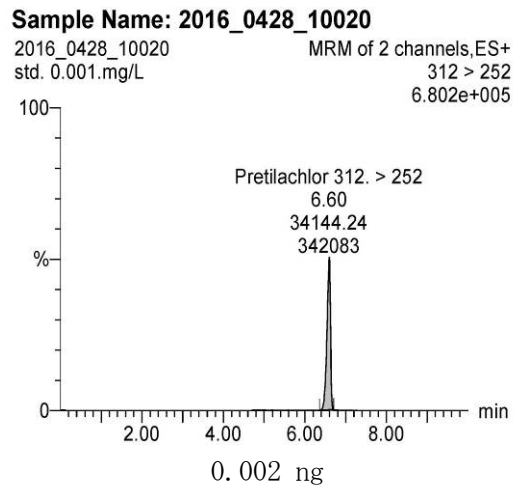
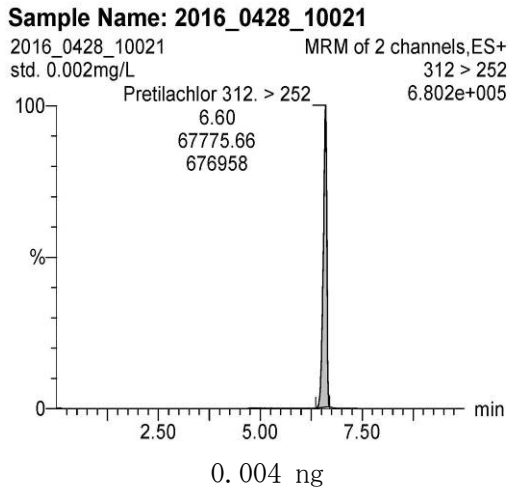
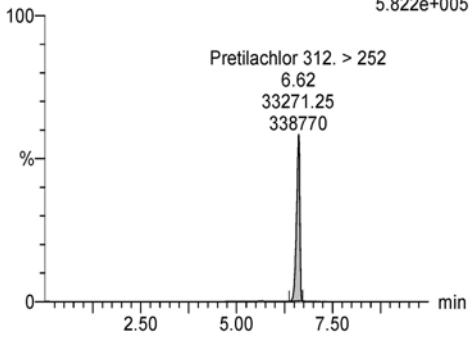


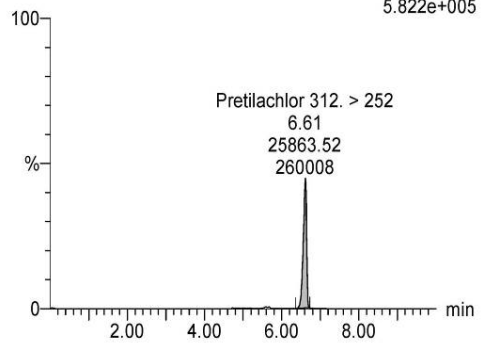
図1 プレチラクロール標準品のクロマトグラム

Sample Name: 2016_0525_10048
 2016_0525_10048 MRM of 2 channels, ES+
 R-1(3ug/L)[500mL] 312 > 252
 5.822e+005



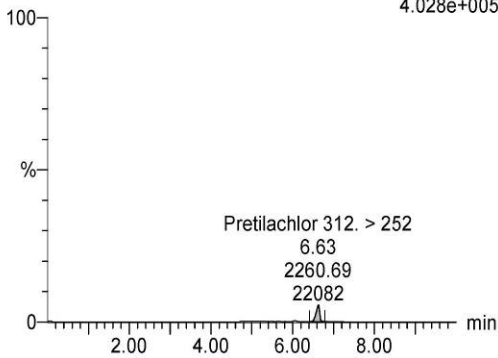
2 μ L/500 mL/0.2 L
 (3 μ g/L)

Sample Name: 2016_0525_10045
 2016_0525_10045 MRM of 2 channels, ES+
 R-1(0.1ug/L)[20mL] 312 > 252
 5.822e+005



2 μ L/20 mL/0.2 L
 (0.1 μ g/L)

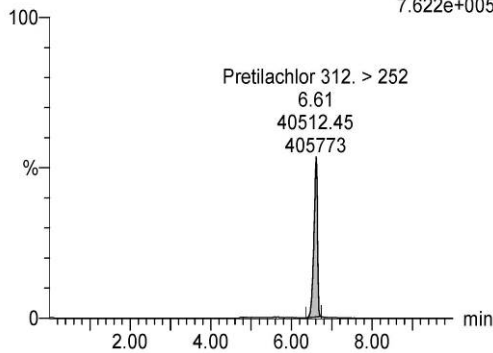
Sample Name: 2016_0530_10013
 2016_0530_10013 MRM of 2 channels, ES+
 r-1 0.001 ug/L[2mL] 312 > 252
 4.028e+005



2 μ L/2 mL/0.2 L
 (0.001 μ g/L)

図2 プレチラクロール回収試験のクロマトグラム

Sample Name: 2016_0615_10008
 2016_0615_10008 MRM of 2 channels, ES+
 SR-1(0.1ppb)[20mL] 312 > 252
 7.622e+005



2 μ L/20 mL/0.2 L
 (0.1 μ g/L 7日間保存)

図3 プレチラクロール保存安定性試験のクロマトグラム

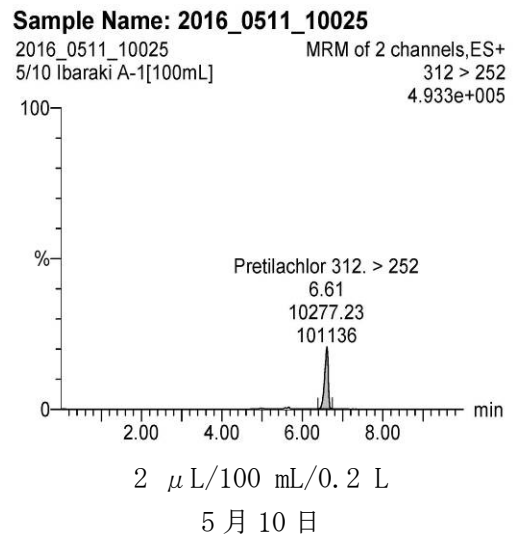
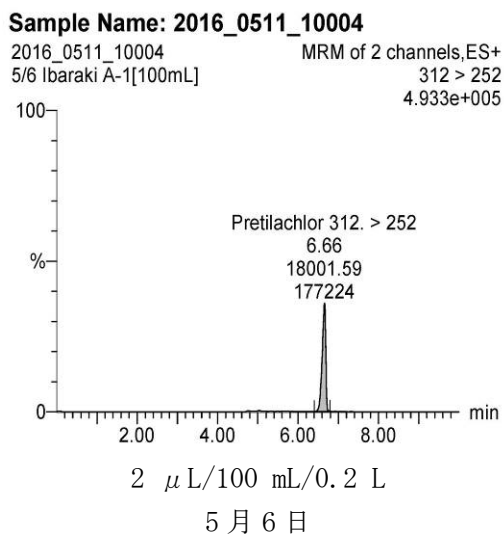
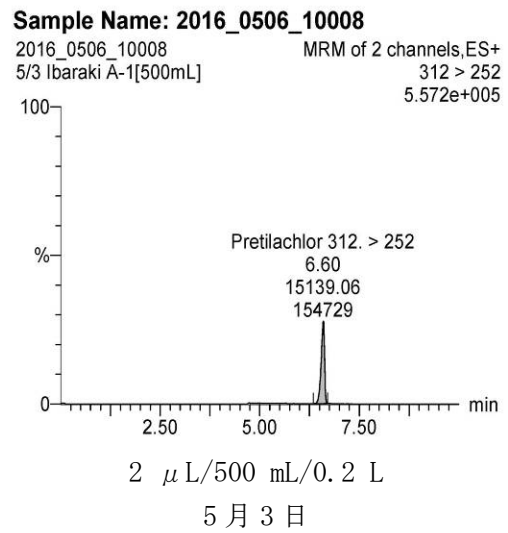
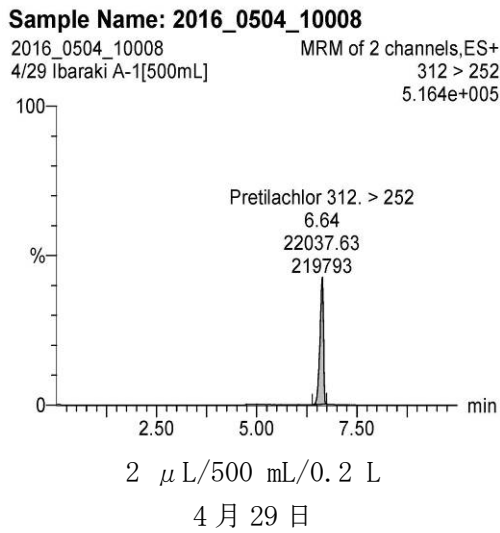
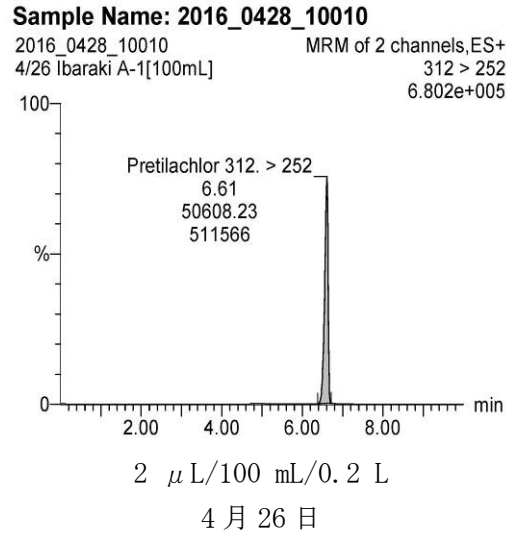
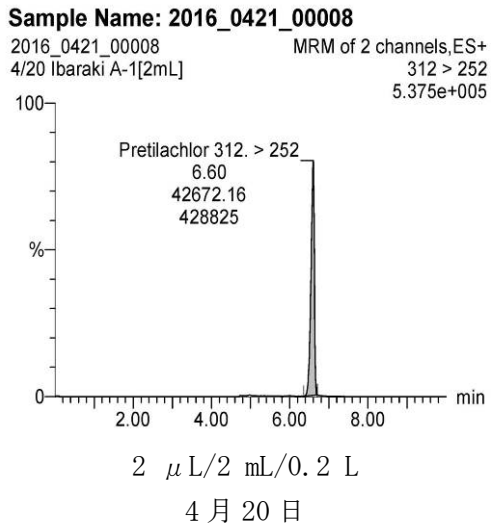
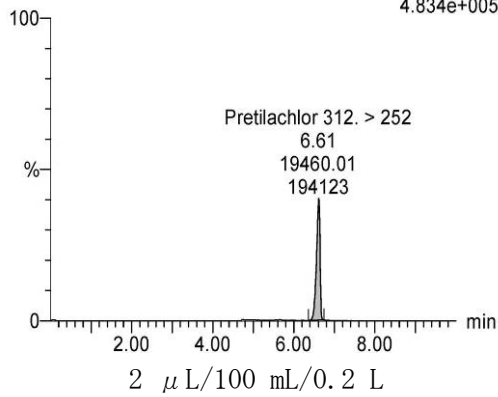


図 4-1 試料のクロマトグラム(プレチラクロール 浅川橋)

Sample Name: 2016_0518_10011

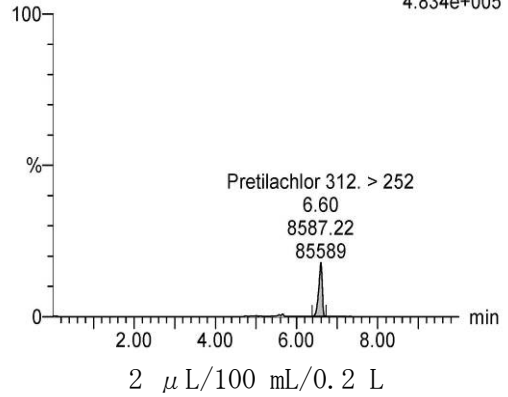
2016_0518_10011 MRM of 2 channels, ES+
5/13 Ibaraki A-1[100mL] 312 > 252
4.834e+005



5月13日

Sample Name: 2016_0518_10032

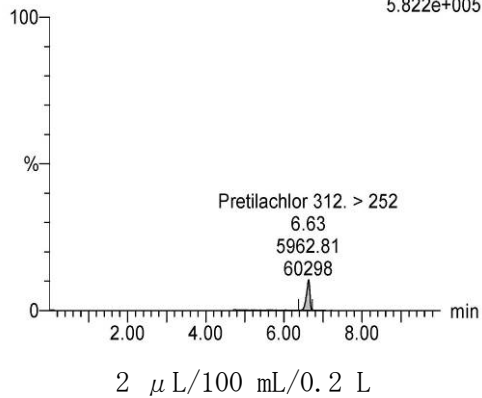
2016_0518_10032 MRM of 2 channels, ES+
5/17 Ibaraki A-1[100mL] 312 > 252
4.834e+005



5月17日

Sample Name: 2016_0525_10011

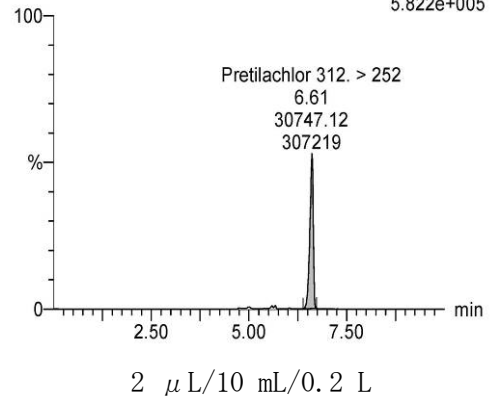
2016_0525_10011 MRM of 2 channels, ES+
5/20 Ibaraki A-1[100mL] 312 > 252
5.822e+005



5月20日

Sample Name: 2016_0525_10025

2016_0525_10025 MRM of 2 channels, ES+
5/24 Ibaraki A-1[10mL] 312 > 252
5.822e+005

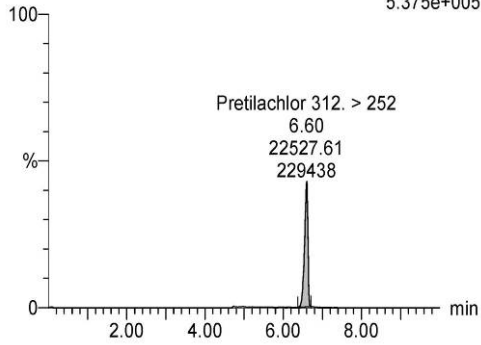


5月24日

図 4-2 試料のクロマトグラム(プレチラクロール 浅川橋)

Sample Name: 2016_0421_00010

2016_0421_00010 MRM of 2 channels, ES+
4/20 Ibaraki B-1[2mL] 312 > 252
5.375e+005

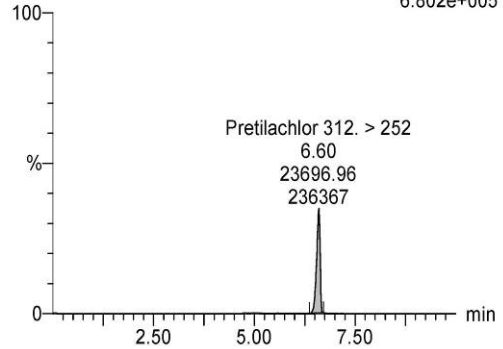


2 μ L/2 mL/0.2 L

4月20日

Sample Name: 2016_0428_10012

2016_0428_10012 MRM of 2 channels, ES+
4/26 Ibaraki B-1[100mL] 312 > 252
6.802e+005

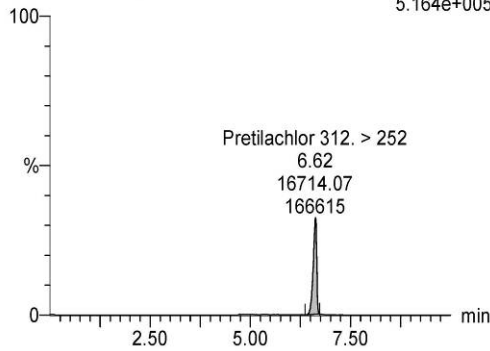


2 μ L/100 mL/0.2 L

4月26日

Sample Name: 2016_0504_10010

2016_0504_10010 MRM of 2 channels, ES+
4/29 Ibaraki B-1[500mL] 312 > 252
5.164e+005

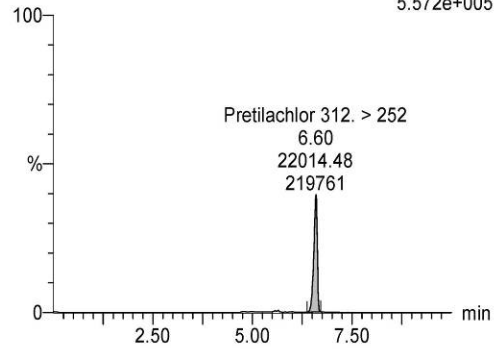


2 μ L/500 mL/0.2 L

4月29日

Sample Name: 2016_0506_10010

2016_0506_10010 MRM of 2 channels, ES+
5/3 Ibaraki B-1[500mL] 312 > 252
5.572e+005

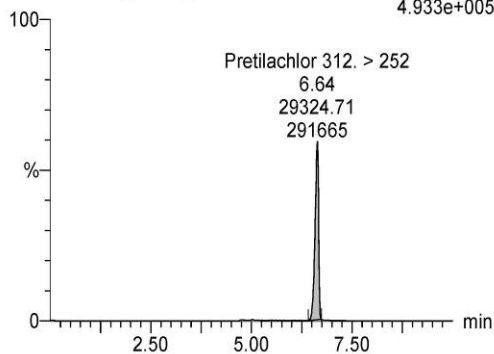


2 μ L/500 mL/0.2 L

5月3日

Sample Name: 2016_0511_10006

2016_0511_10006 MRM of 2 channels, ES+
5/6 Ibaraki B-1[100mL] 312 > 252
4.933e+005

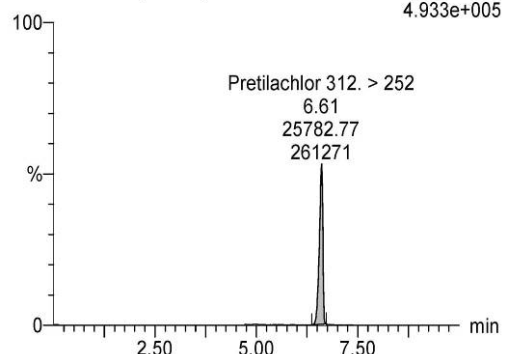


2 μ L/100 mL/0.2 L

5月6日

Sample Name: 2016_0511_10027

2016_0511_10027 MRM of 2 channels, ES+
5/10 Ibaraki B-1[100mL] 312 > 252
4.933e+005



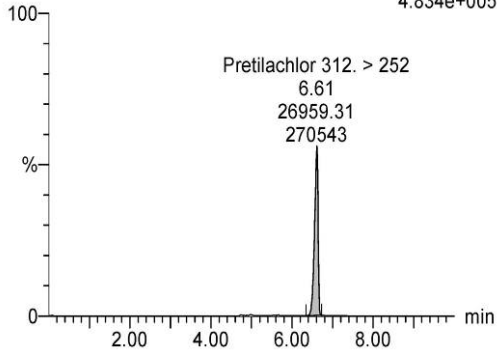
2 μ L/100 mL/0.2 L

5月10日

図 5-1 試料のクロマトグラム(プレチラクロール 東橋)

Sample Name: 2016_0518_10013

2016_0518_10013 MRM of 2 channels, ES+
5/13 Ibaraki B-1[100mL] 312 > 252
4.834e+005

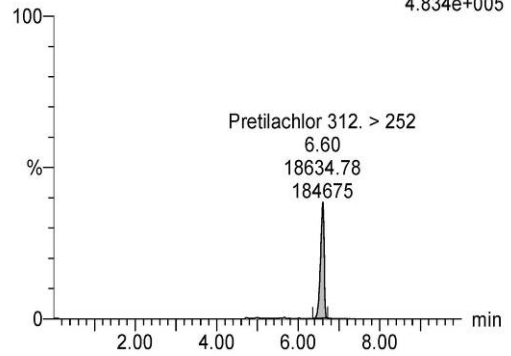


2 μ L/100 mL/0.2 L

5月13日

Sample Name: 2016_0518_10034

2016_0518_10034 MRM of 2 channels, ES+
5/17 Ibaraki B-1[100mL] 312 > 252
4.834e+005

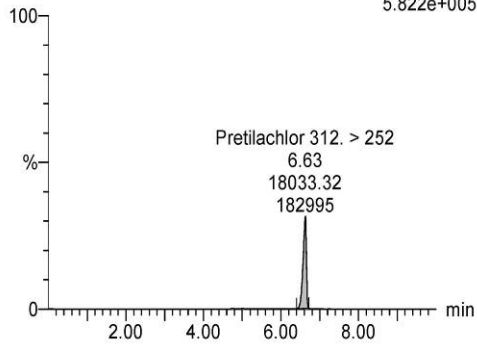


2 μ L/100 mL/0.2 L

5月17日

Sample Name: 2016_0525_10013

2016_0525_10013 MRM of 2 channels, ES+
5/20 Ibaraki B-1[100mL] 312 > 252
5.822e+005

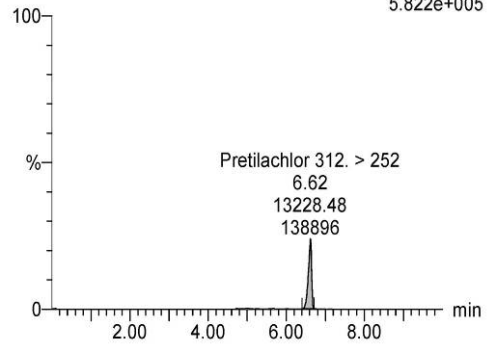


2 μ L/100 mL/0.2 L

5月20日

Sample Name: 2016_0525_10034

2016_0525_10034 MRM of 2 channels, ES+
5/24 Ibaraki B-1[100mL] 312 > 252
5.822e+005



2 μ L/100 mL/0.2 L

5月24日

図 5-2 試料のクロマトグラム(プレチラクロール 東橋)

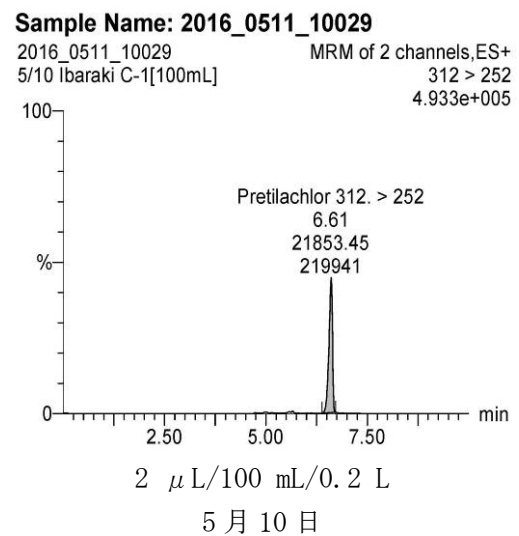
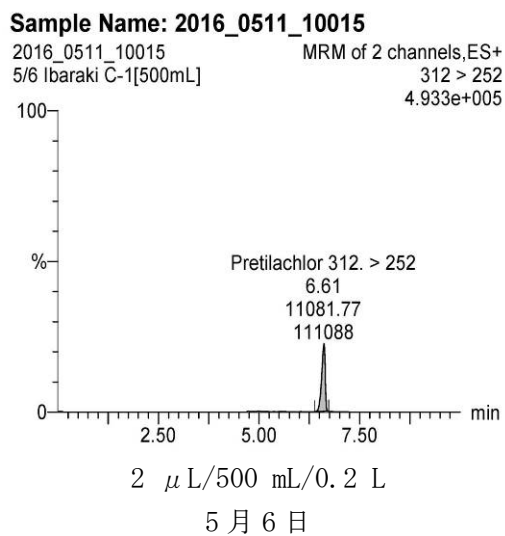
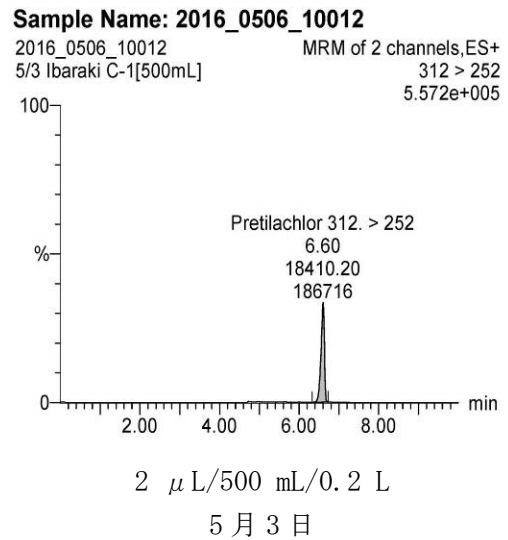
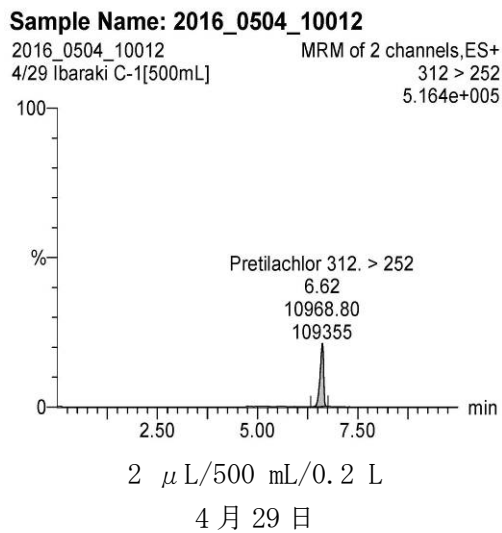
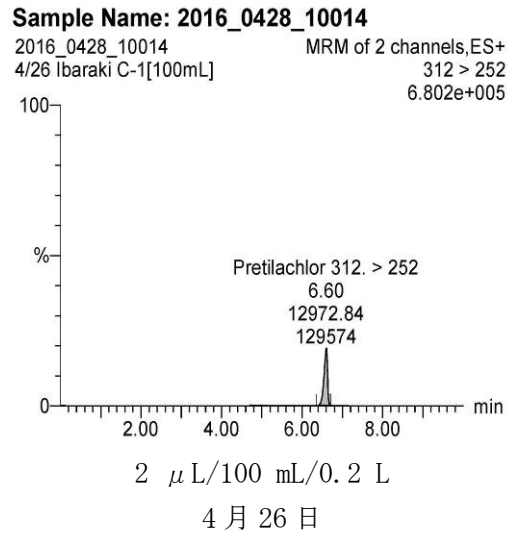
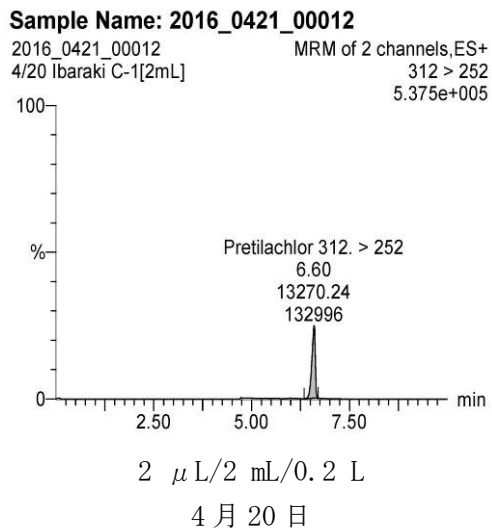
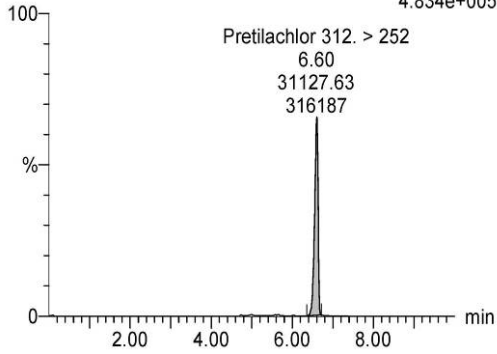


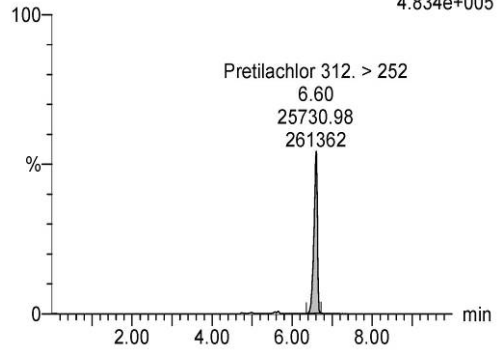
図 6-1 試料のクロマトグラム(プレチラクロール 新落合橋)

Sample Name: 2016_0518_10015
 2016_0518_10015 MRM of 2 channels, ES+
 5/13 Ibaraki C-1[100mL] 312 > 252
 4.834e+005



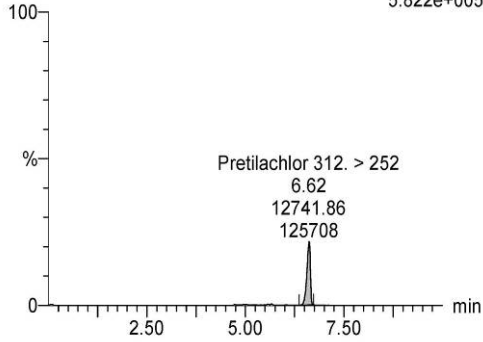
2 μ L/100 mL/0.2 L
 5月13日

Sample Name: 2016_0518_10036
 2016_0518_10036 MRM of 2 channels, ES+
 5/17 Ibaraki C-1[100mL] 312 > 252
 4.834e+005



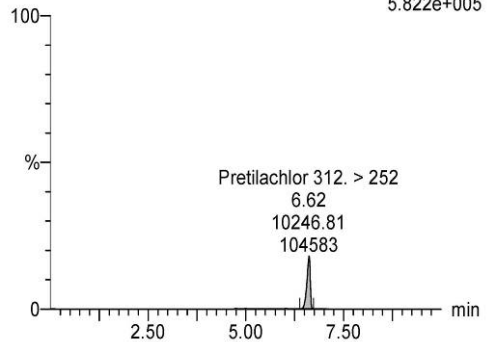
2 μ L/100 mL/0.2 L
 5月17日

Sample Name: 2016_0525_10015
 2016_0525_10015 MRM of 2 channels, ES+
 5/20 Ibaraki C-1[100mL] 312 > 252
 5.822e+005



2 μ L/100 mL/0.2 L
 5月20日

Sample Name: 2016_0525_10036
 2016_0525_10036 MRM of 2 channels, ES+
 5/24 Ibaraki C-1[100mL] 312 > 252
 5.822e+005



2 μ L/100 mL/0.2 L
 5月24日

図6-2 試料のクロマトグラム(プレチラクロール 新落合橋)